

BURNDY® TAKE OFF SERVICES

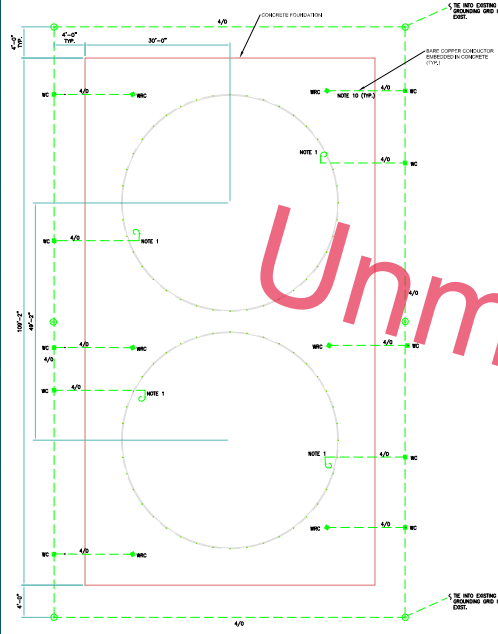




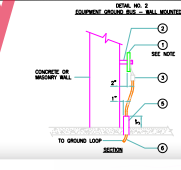
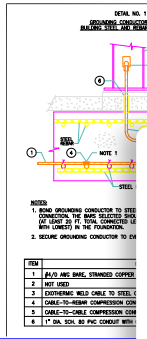
GROUNDING GENERAL NOTES

1. COVER A FEET OF #4/0 AWG GROUND CONDUCTOR INDICATED BY THIS GROUNDING IN THIS WALL BE CONNECTED TO GROUND BAR BY ELECTRICIAN.
2. PROVIDE ALL LAMPS, MOTORS, EQUIPMENT, TOOLS AND SUPPLIES TO REMAIN IN THE WALL BE CONNECTED TO GROUNDING SYSTEM INCLUDING RECEIVING, UNLOADING AND PROTECTION FROM DAMAGE AND NOISE.
3. ALL ELECTRICAL WORK SHALL BE IN STRICT COMPLIANCE WITH THE REQUIREMENTS OF THE STATE EDITION OF THE NATIONAL ELECTRICAL SAFETY CODE (NEC).
4. ALL ELECTRICAL SYSTEMS, AS DETAIL IN THESE GENERAL NOTES AND AS INDICATED ON THE DRAWINGS.
5. MATERIALS SHALL BE AS SPECIFIED, NO SUBSTITUTIONS WILL BE ACCEPTED. WHEN MATERIALS OR EQUIPMENT ARE NOT SPECIFIED, THEY SHALL BE OF THE BEST QUALITY AVAILABLE FROM THE SOURCE.
6. GROUNDING RESISTANCE TO EARTH SHALL NOT EXCEED 5 OHMS OR AS REQUIRED TO MEET OSHA, MSHA AND/OR LOCAL AND STATE CODES.
7. ALL WIRE GROUNDING CONDUCTORS SHALL BE #4/0 AWG AND BARE COPPER CONDUCTOR, CLASS B STRANDED, UNLESS OTHERWISE NOTED.
8. GROUND CABLE OUTSIDE OF THE FOUNDATIONS SHALL BE INSTALLED A MINIMUM OF 30" BELOW GROUND.
9. GROUND CONDUCTORS SHALL BE CONCRETE, STRANDED, SOFT DRAWN BARE COPPER CONDUCTORS UNLESS OTHERWISE NOTED.
10. GROUNDING CONDUCTOR INSTALLED VERTICALLY IN FOOTINGS AND FOUNDATIONS SHALL NOT BE USED AS TOP OF THE LOWEST LEVEL OF REBAR PRIOR TO CONCRETE POUR. SECURE GROUNDING CONDUCTOR TO REBAR USING TO BEING APPROXIMATELY 100" TO 150" FROM THE TOP OF THE FOUNDATION.
11. BRANCH GROUND CONNECTION SHALL BE TERMINATED WHEN CONNECTED TO THE MAIN GROUNDING SYSTEM CABLE.
12. ALL OTHER GROUNDING MATERIALS SHALL BE IN ACCORDANCE WITH THE TYPICAL GROUNDING INSTALLATION.
13. ALL INTERNAL WELD CONNECTIONS SHALL BE MADE STRICTLY IN ACCORDANCE WITH THE MANUFACTURER'S INSTRUCTIONS.
14. ALL EXTERNAL WELD CONNECTIONS INCLUDING ALL COUPLERS, UNIONS, SHALL BE MECHANICALLY PROTECTED WITH GALVANIZED AND MECHANICALLY TO REMAIN APPROXIMATELY 100" TO 150" FROM THE TOP OF THE FOUNDATION.
15. PROVIDE 1" WIDE SLEEVE THIRD FLOOR INSIDE GROUND WIRE STUB-UP SLEEVE TO EXTEND 3" ABOVE AND BELOW FLOOR.
16. GROUND ROD SHALL BE COPPER CLAD STEEL WITH 3/4" DIA AND 120" LENGTH.
17. ALL GROUNDING SYSTEMS SHALL BE BONDED TOGETHER AT GROUND LEVEL.

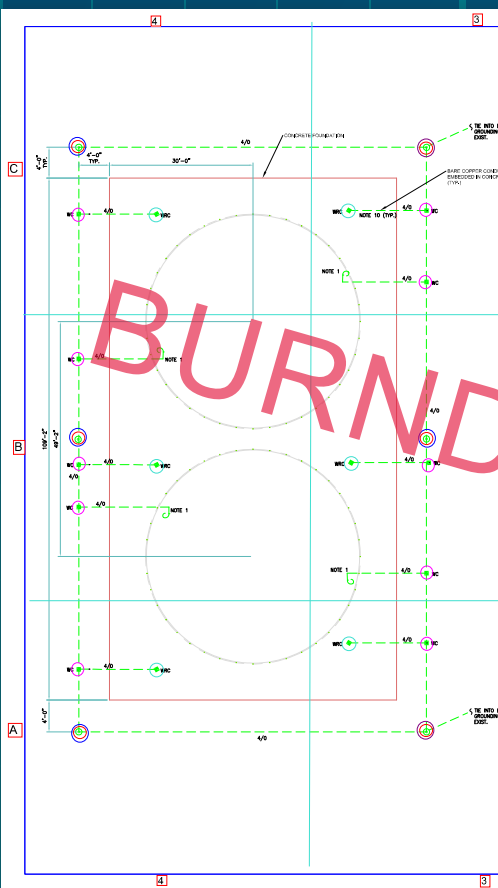
- LEGE**
- -
 -
 -



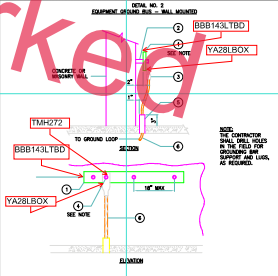
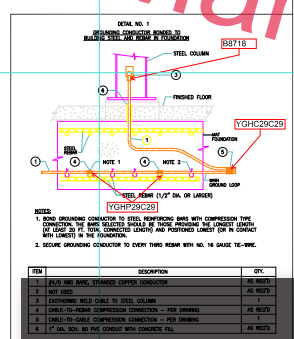
Unmarked



SI.No.	DRW.NO.	ITEM DESCRIPTION	CATALOGUE #	CARTRIDGE	PRICE KEY	HANDLE CLAMP	QTY
1	P170055-E-001	EXO THERMIC WELD CONNECTION CABLE #4/0 TO STEEL COLUMN	B8718	150	4	B106	As Required
2		COMPRESSION CONNECTION CABLE #4/0 TO REBAR #4	YGHP29C29				As Required
3		COMPRESSION CONNECTION CABLE #4/0 TO CABLE #4/0	YGHC29C29				As Required
4		COPPER BUSBAR	BBB143LTD				As Required
5		COMPRESSION LUG #4/0	YA28LBOX				As Required
6		HARDWARE KIT SILICON BRONZ - 1/2"	TMH272				As Required
7		GROUND ROD (3/4"x10')	B38463504				6
8		EXO THERMIC CONNECTION THROUGH CABLE #4/0 TO GROUND ROD 3/4"	B561	115	4	B106	4
9		EXO THERMIC CONNECTION 3 CABLE #4/0 TO GROUND ROD 3/4"	B5237	200	7	B106	2
10		EXO THERMIC T CONNECTION CABLE #4/0 TO CABLE #4/0	B241	150	4	B106	10
11		EXO THERMIC CONNECTION CABLE #4/0 TO REBAR #4	B7899	150	4	B106	6
12		WELD METAL	115				1 BOX
13		WELD METAL	150				2 BOX
14		WELD METAL	200				1 BOX
15		HANDLE CLAMP	B106				1
16		DIE FOR YGHP29C29, YGL29C29	U997P				1
17		DIE FOR YGHC29C29	U997				1
18		DIE FOR YA28LBOX	U28RT				1
19		DIE FOR YGHP34C29, YGL34C29	PU998				1
20		INSTALLATION TOOL FOR COMPRESSION CONNECTION	PAT750LI				1



BURNDY Marked



ITEM	DESCRIPTION	QTY
1	#4/0 AWG BARE STRANDED COPPER CONDUCTOR	AS REQUIRED
2	WELD METAL	AS REQUIRED
3	COMPRESSION DIE (LUG)	100
4	1/2\"/>	

ITEM	DESCRIPTION	QTY
1	1/4\"/>	

Our unique Take Offs raise the bar on the level of detail BURNDY can supply our customers in a short amount of time. Reference the job details with our easy to read grid system.

This Bill of Material (BOM) is based on the information provided and is an estimation of the materials needed to complete the project. BURNDY LLC is not a licensed contractor or engineering firm and one should be consulted for final project BOM.



At BURNDY, we are more than just a supplier, we are your technical partner. From data centers to control rooms and long cable runs, our exclusive take off program can arm you with part number level detail for BOM preparation.

Our expert BURNDY® Take Off Team can offer product suggestions and a devoted BURNDY Sales Representative is on hand for seamless communication throughout the process.

- We provide you with expert knowledge of BURNDY and competitor products.
- Receive the best possible solutions for all types of connections such as moving gates, swimming pools and lightning protection.
- Our product solutions meet all requirements for telecommunication, aerospace and military (FAA) projects as well as those for the federal government.
- Enjoy quick turn around time.
- There is absolutely no cost to you.

Go beyond BURNDY connectors. Our detailed take offs cross-reference everything from cable ties to power circuits and bring all of the BURNDY brands together including CMC®, thermOweld® and Wiley.

Quality Data In, Quality Results in Return

Make sure to include specifications with drawings or an online link and password for the project. In return, the BURNDY® Take Off program can provide all specifications *for your entire project.*

Contact your local BURNDY Sales Representative for details.



Trust the BURNDY® Engineered System

The BURNDY® Engineered System of coordinating dies, connectors and tools are always designed to work together and engineered to meet stringent, accepted quality standards.



www.burndy.com | 1-800-346-4175

Customer Service Department

7 Aviation Park Drive
Londonderry, NH 03053
1-800-346-4175
1-603-647-5299 (International)

Canada

1-800-465-7051

Mexico

011-52-722-265-4400

Tool Service Center

Littleton Industrial Park
Littleton, NH 03561
1-800-426-8720

